

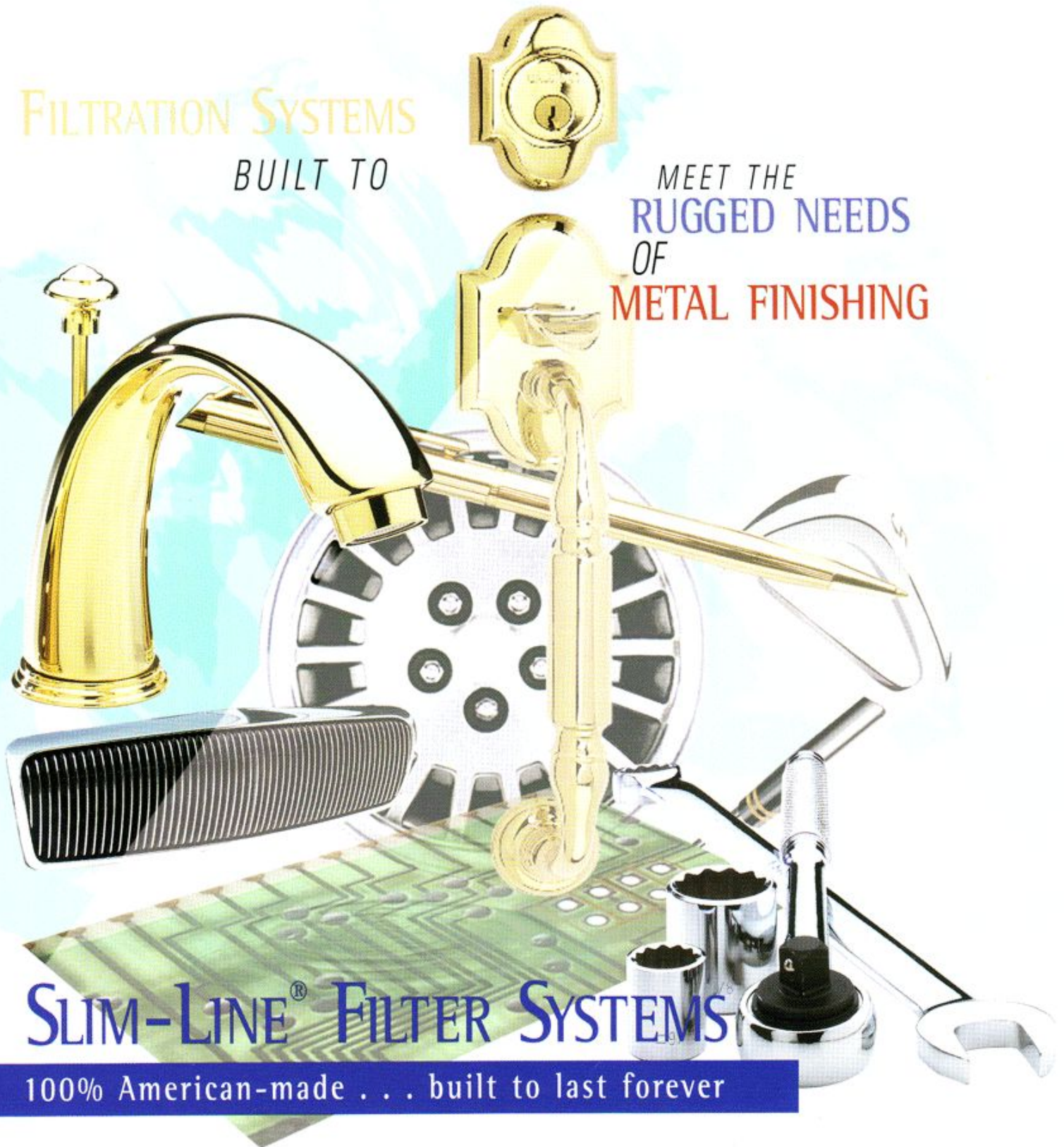


ANODE PRODUCTS

FILTRATION SYSTEMS

BUILT TO

MEET THE  
RUGGED NEEDS  
OF  
METAL FINISHING



SLIM-LINE<sup>®</sup> FILTER SYSTEMS

100% American-made . . . built to last forever

## SUPERIOR HORIZONTAL DISC PLATE FILTRATION & PLATE LIFTING SYSTEM

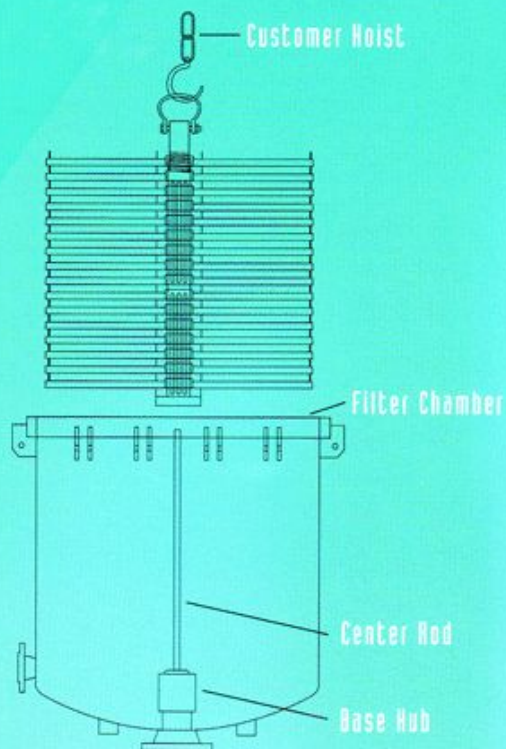
Slim-Line® Filter Systems offer the economy, durability and simplicity of horizontal disc plate filtration—the guts of the system.

Proprietary advantages for you include:

- only 16 filter plates to buy, clean and handle, nearly five times less than competitive units
- high flow rates for efficient production
- maximum clarity of solution for contamination-free rinse
- finer filtration for increased dirt-holding capacity
- simple, easy cleaning procedures with minimal downtime
- reusable or disposable filter media for instant cake and sludge removal.

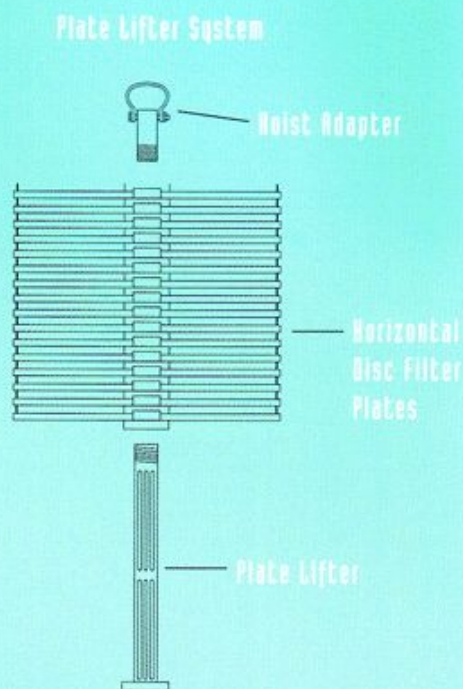
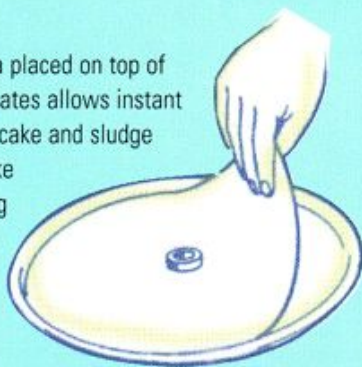
# CLEANER

**BRIGHTER PRODUCTION**



## PLATING WITHOUT ROUGHNESS

Filter media placed on top of the Filter Plates allows instant removal of cake and sludge to help make the cleaning process faster and easier.



Slim-Line® Horizontal Disc Filter Plates are stress relieved to 265° F and machined to allow maximum flow. The stable precoat stays in place, does not break up and holds uniform throughout the production cycle. Precoated material traps more particulate resulting in fewer rejected parts. No expensive, bulky cartridges are necessary.

Filtering is from the top side of filter plate only. Placing filter media on top of the Horizontal Disc Filter Plates permits instant disposal of cake and sludge to help simplify cleaning and to keep adjacent areas carbon and sludge-free. When used with disposable or reusable filter media the filter cloth will last indefinitely. A single operator can perform a complete plate cleaning turnaround in 30 minutes or less. There is no need to drain the chamber.

The telescoping filter plates float to the surface for quick removal.

The optional Plate Lifting System is also easy to assemble and operate. The hoist adapter screws into the plate-lifting device, then the plates and lifter assembly are hoisted from the chamber with minimal solution loss. With centered hoisting, removing and reinstalling the filter plates is quick and easy. Minimal downtime gives you exceptionally fast payback.

The optional Air Blow Down System allows you to remove a dry stack of filter plates from the chamber for cleaner disposal.



SYSTEM IS EASY TO CLEAN

DOWNTIME MINIMAL



## QUALITY . . . OUR HALLMARK

Slim-Line® Filter Systems are designed to ASME engineering guidelines. They are complete and ready for installation . . . the most economical, practical filters available for the metal finishing industry.

The unique design provides the highest flow rates per square foot of filter area with no loss of plating solution. More carbon and sludge are retained than required in most normal plating operations. Rinse water is kept contaminant-free. Maximum solution clarity means finer deposits, resulting in cleaner, brighter production plating without roughness.

Slim-Line® Filter Systems Quality Advantage includes:

- CPVC piping is schedule 80
- 1/4" steel filter chamber is rubber lined
- slurry tank is polypropylene
- filter plates are stress relieved to 265°F and machined to provide maximum flow
- entire system is coated with two-part epoxy paint
- every system is performance-tested



Model SLX 42-30  
Chamber Only

# SLIM-LINE® FILTER SYSTEMS

## HIGHER QUALITY

THAN OTHER PLATING FILTER SYSTEMS!

Redesigned to ASME engineering guidelines, these filter systems now have improved sealing features and enhanced corrosion resistance. The new system layout allows easier access to the pump for inspection and maintenance. A larger polypropylene slurry tank holds the entire contents of the filter chamber. The slurry tank has a hinged safety cover.

	System Model Number	Chamber only Model Number	Flow Rate [GPH]	Filter Area [sq. ft.]
Slim-Line® Filter Systems	SLX 24-20	SLX 24-20 C/O	4,500	22.75
	SLX 24-30	SLX 24-30 C/O	6,500	38.5
	SLX 30-30	SLX 30-30 C/O	10,000	57.2
	SLX 36-30	SLX 36-30 C/O	15,000	86.4
	SLX 42-30	SLX 42-30 C/O	20,000	113.5

All filter systems are complete with motor starter, baseplate, slurry tank, double suction and discharge. Chamber only units are complete, ready to operate

with your present system. Electrical components are UL & CSA certified. Larger systems and specific engineering applications are available.

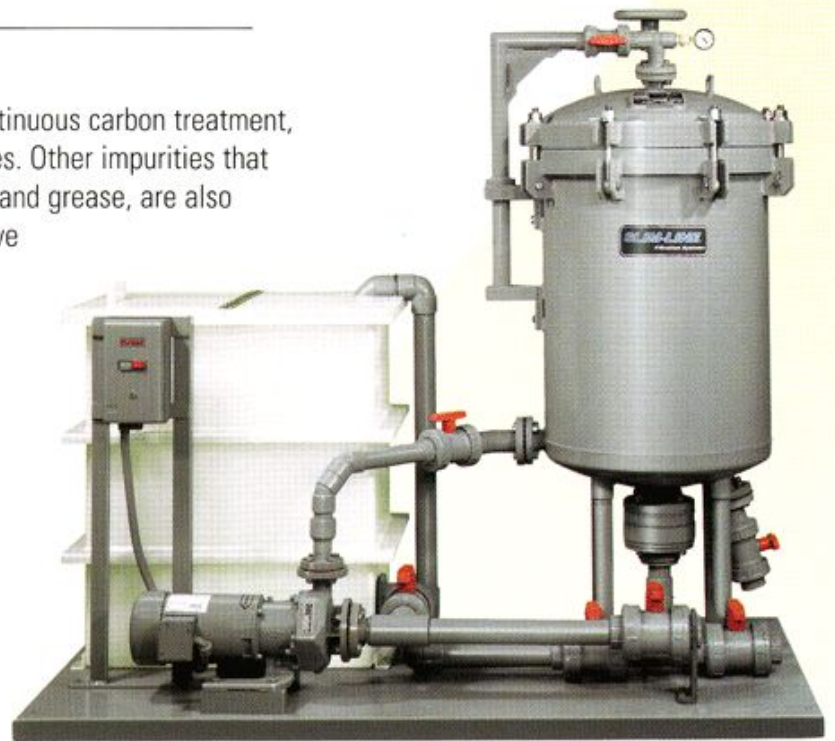


Anode Filter Systems are a positive method for continuous carbon treatment, removing all inorganic, as well as, organic impurities. Other impurities that affect the appearance of plated parts, including oil and grease, are also removed. High clarity of solution results. You achieve smoother deposits continually while maintaining overall operating efficiencies and eliminating unnecessary shut-downs and rejected parts.

Here's how you save money:

- cleaning turnaround time is 30 minutes or less
- cleaning procedures require only one person
- plating bath is kept clean and clear of contaminants so plated product rejects are substantially reduced

Enjoy trouble-free service for years.



Model SLX-24-30  
Slim-Line® System

## SAVE MONEY WITH SLIM-LINE® FILTER SYSTEMS

Model SLX-36-30  
Slim-Line® System



### Other Slim-Line® Advantages . . .

Slim Line® Filter Systems can be custom designed to meet special applications or custom engineered to fit your plant process and configuration. For example, twin filter chambers will provide increased capacity. Options like the plate lifter (see pages 2 & 3) make filter cleaning faster and easier; exterior rubber lining physically protects your system; proprietary Pressure Sensor continuously monitors the system and automatically discontinues operation when pressure reaches above or below the optimum operating range. This safeguard eliminates both pump cavitation and excessive wear across the seal face.

# LI'L GUY® FILTER SYSTEMS

Proven workhorses, LI'L GUY® Filter Systems are durable, horizontal disc plate, precoat filter systems that provide superior filtration at an economical cost.

Corrosion resistant to most chemicals, this effective filtration method ensures a stabilized filter cake and continuous carbon treatment for the complete removal of organic and inorganic impurities.

Models achieve flow rates ranging from 2,000 GPH with 11 sq. ft. of filter area up to 6,000 GPH with 39 sq.ft. of filter area. These high flow rates are achieved through efficient filter plate design.



Model LG 24-36  
LI'L GUY® Filter System

**HIGH QUALITY &  
RUGGED PORTABILITY**  
AT AN ECONOMICAL PRICE

The LI'L GUY® has a larger slurry tank to hold the entire contents of the filter chamber and a repositioned pump for easier inspection and maintenance. Select either a Sequence 1000 or a ANSIMAG Pump.

	System Model Number	Flow Rate [GPH]	Filter Area [sq. ft.]
LI'L GUY® Filter Systems	LG 12-36	2,000	11.5
	LG 24-26	4,000	22.75
	LG 24-36	6,000	38.75
LI'L GUY® II Filter Systems	LG II 10-20	750	7.4
	LG II 10-30	1,100	11.5
	LG II 10-36	1,500	14.3

All filter systems are complete with motor starter, baseplate or cart, slurry tank, double suction and discharge.

Electrical components are UL & CSA certified. Specific engineering applications are available.

Cleaning is fast and simple with float-to-the-surface horizontal disc filter plates for quick removal. Minimal maintenance means minimal downtime. There are no expensive cartridges to buy or discard.

All LI'L GUY® Filter Systems are complete for immediate installation and operation. Each compact, durable system has a rubber-lined steel filter chamber, polypropylene slurry tank, pump, double suction and discharge mounted on a skid base plate with casters for easy maneuvering.

## LI'L GUY® II . . .

Features the proprietary Slim-Line® horizontal disc plate filter system providing fine filtration and superior dirt holding capacity in an economical, compact mobile cart configuration.

You benefit with:  
Instant mobility—maneuver over rough, uneven surfaces with ease, wherever filtration is necessary in your plant or shop. The space-saving, lightweight cart is equipped with large pneumatic tires and steering handle.

Corrosion-proof construction—LI'L GUY® II Filter Systems are 99% CPVC to perform in the harshest chemical streams and



Model LG II 10-20  
LI'L GUY® II Filter System

# MOBILE CORROSION-PROOF LI'L GUY® II THE NEW FILTER SYSTEMS



Model LG II 10-30  
LI'L GUY® II  
Filter System

Ideal for jewelry & PC board plating

high temperature operations. An enclosed compact case protects working parts from corrosive environments and spills.

Lower flow rate applications—models range from 750 GPH with 7.4 sq. ft. of filter area to 1,500 GPH at 14.3 sq. ft.

Economical system—this entire CPVC, horizontal disc plate filter is engineered to provide an excellent value. The unique design of the filter plates seal at the ID and OD of the filter media offers positive filtration. The stack of filter plates are a one piece assembly that is easily removed and reinstalled from the top of the filter chamber for fast, efficient cleaning. LI'L GUY® II is complete and ready to filter.

# SLIM-LINE® FILTER SYSTEMS SPECIFICATIONS

FOR OVER FIFTY YEARS

## SLIM-LINE® SYSTEMS



Model Number	Flow Rate (GPH)	Size of Chamber	No. of Filter Plates	Filter Plate Size	Filter Area (sq. ft.)	Weight (lbs)
SLX 24-20	4,500	24" x 20"	10	22"	22.75	1,000
SLX 24-30	6,500	24" x 30"	16	22"	38.75	1,400
SLX 30-30	10,000	30" x 30"	16	27"	57.2	1,800
SLX 36-30	15,000	36" x 30"	16	33"	86.4	2,000
SLX 42-30	20,000	42" x 30"	16	39"	113.5	2,400

## FILTER CHAMBER ONLY\*



SLX 24-20 C/O	4,500**	24" x 20"	10	22"	22.75	550
SLX 24-30 C/O	6,500**	24" x 30"	16	22"	38.75	600
SLX 30-30 C/O	10,000**	30" x 30"	16	27"	57.2	750
SLX 36-30 C/O	15,000**	36" x 30"	16	33"	86.4	900
SLX 42-30 C/O	20,000**	42" x 30"	16	39"	113.5	1,300

## Li'L GUY® SYSTEMS



LG 12-36	2,000	12" x 36"	21	10"	11.15	600
LG 24-26	4,000	24" x 26"	10	22"	22.75	750
LG 24-36	6,000	24" x 36"	16	22"	38.75	1,000

## Li'L GUY® II SYSTEMS



LG II 10-20	750	10" x 20"	18	9"	7.4	325
LG II 10-30	1,100	10" x 30"	28	9"	11.5	375
LG II 10-36	1,500	10" x 36"	35	9"	14.3	400

## PLATE LIFTING SYSTEM

### & OPTIONAL ACCESSORIES



- Plate-lifting system: Alloy 20SS, Titanium, Hastelloy-C
- Filter media: disposable or reusable
- Anode bags
- Exterior lining: Plasite coating/rubber
- Filter plates
- Pumps
- Filter By-Pass System
- Interior linings: Koroseal or Hypalon
- Seals and parts
- NEMA enclosures
- Pressure sensor

Selecting a system for chloride zinc applications, filter area must be a minimum of twice the area to achieve same flow rate.

\*Chamber only units are complete with filter plates and ready to incorporate into your present system.

\*\* Maximum recommended flow rate.



9425 Seymour Avenue Schiller Park, Illinois 60176 USA  
 Voice 847-671-5550 Fax 847-671-2883 Toll-Free 800-255-7224